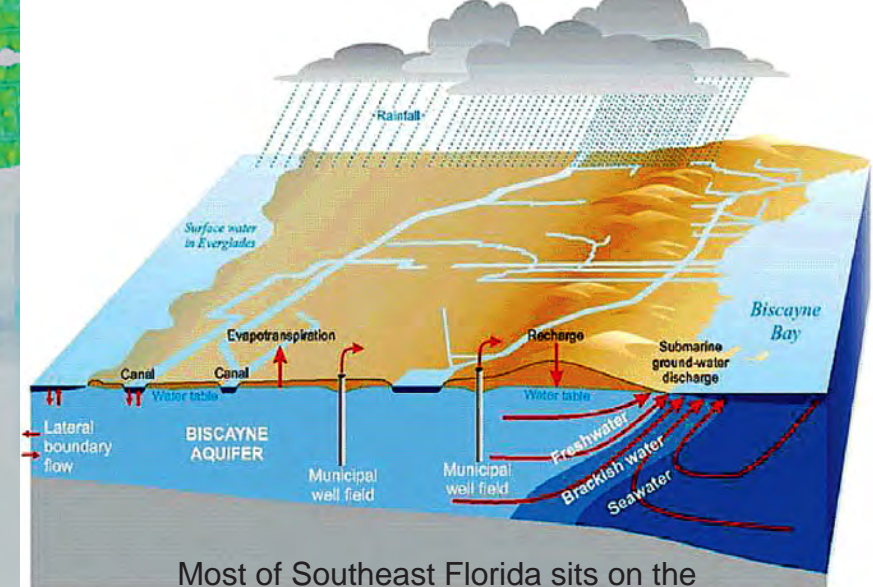
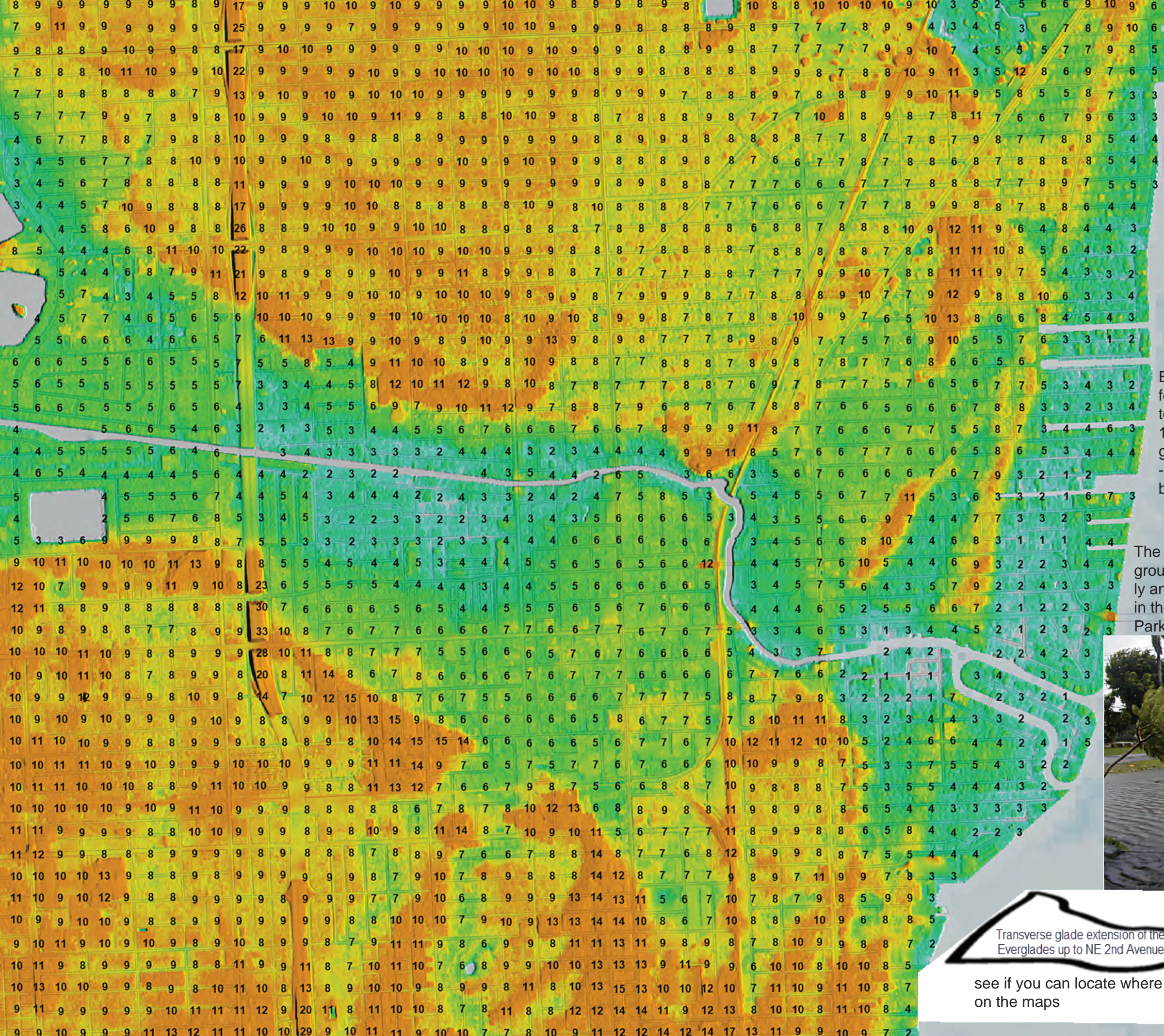


Combined from 1924 aerial photos taken over Miami. Land clearing and some building are going on in the Miami Shores, El Portal, and Sherwood Forest developments. Oakland Grove is still mostly a grove with a nursery to the east of it next to the FEC railroad tracks. The next five years after these photos were taken would see the dredging of the C-7 canal up to NE 2nd Avenue and two events that ended the pre-World War II real estate boom, the Miami Hurricane of 1926 and the great depression. Sources and more information at <http://miamiultra.fiu.edu/environmental-history/aerial-photography/>

With canal drainage which came to the Little River after 1925 fresh water levels dropped. Before then land lower than 5 to 6 feet was often inundated by water from the Everglades (see elevation map on other side).

Most of what we call the Little River or C-7 canal now was an extension of the Everglades (a "transverse glade") going almost to what is now NE 2nd Avenue. There the Little River began, dropping 6 feet from there to Biscayne Bay with rapids and fresh water springs in the river.

look at the maps on both sides and locate where you live and what the elevation and water features are now (other side) and what it was like in 1924 (this side).



Most of Southeast Florida sits on the Biscayne Aquifer, Southeast Florida's main water supply contained in highly porous limestone rock through which water flows rapidly. (graphic from USGS)

Elevation map -- numbers show elevation in feet. Colors show elevation also corresponding to numbered feet. Compare locations with 1924 aerial photo on other side. Before Everglades drainage inland water levels were higher -- note differences in trees and agriculture between higher and lower elevation areas.

The top of the water table in the porous aquifer is very near ground level. In flood situations it can rise to the flood level rapidly and water comes out of the ground. Much of this water (below) in the first Hurricane Irene did not flow into the Sherwood Forest Park area from local rainfall but came up from the ground.



see if you can locate where this was on the maps