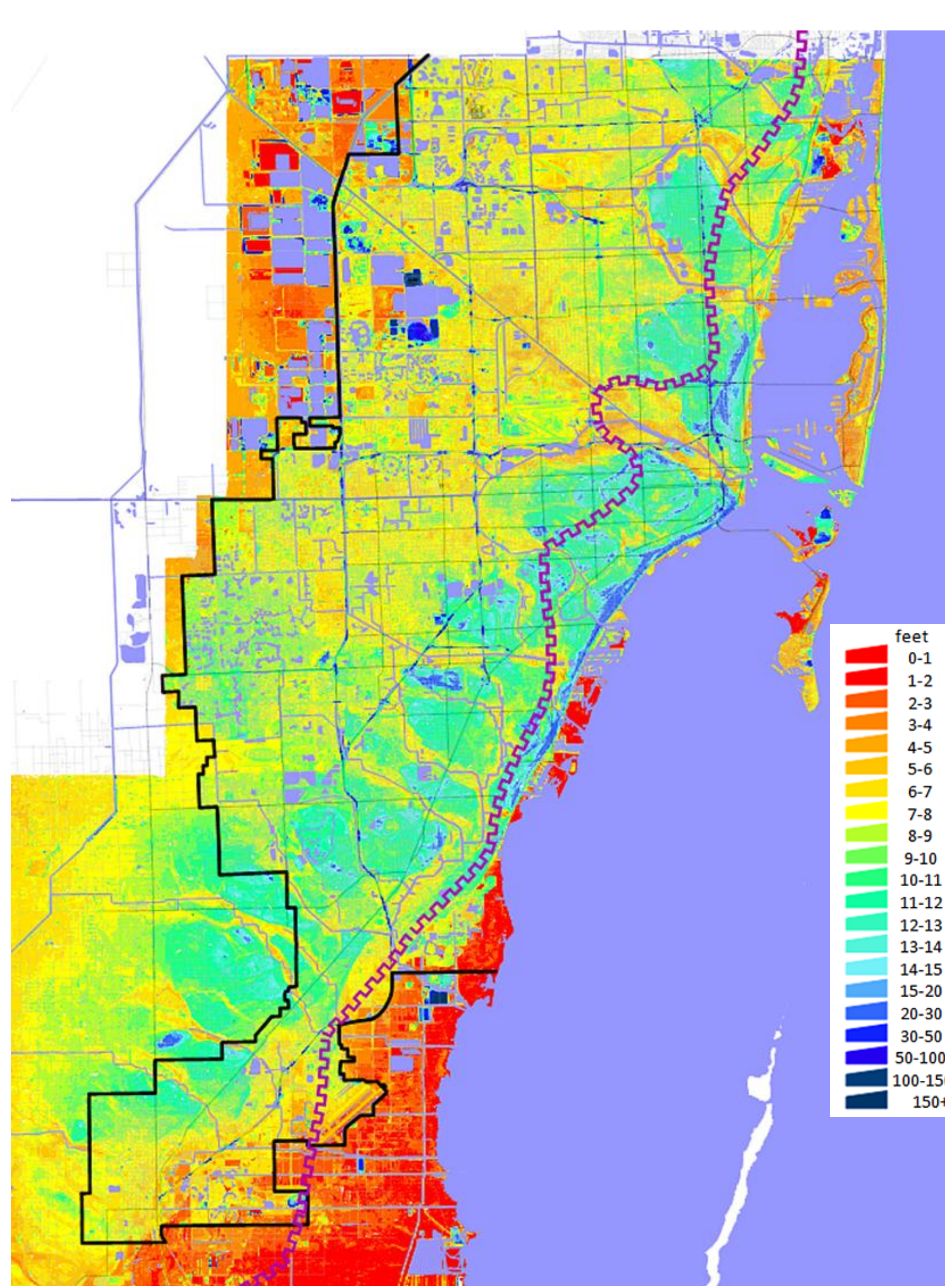
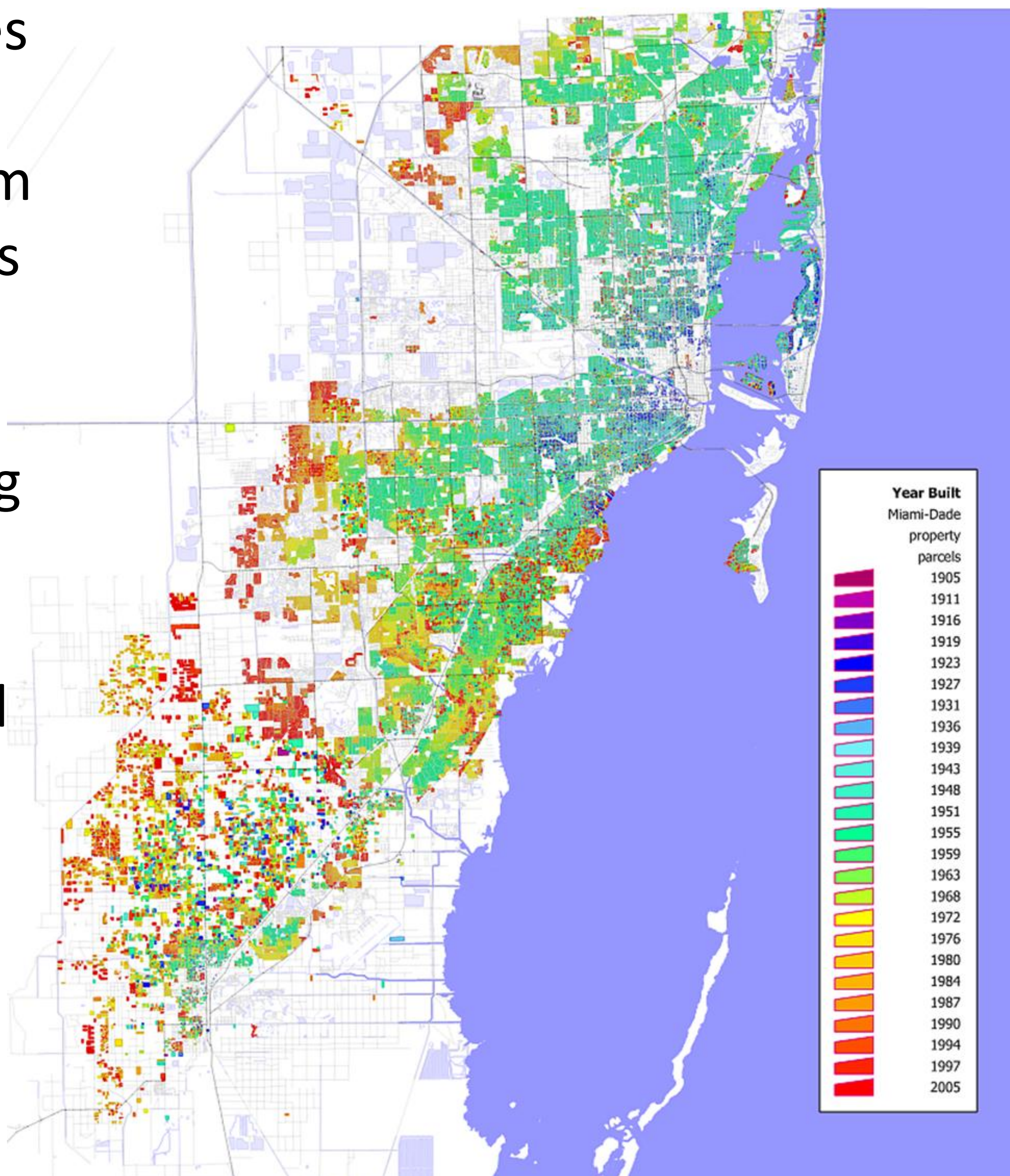


Legacies of 20th century urban growth patterns in South Florida and resultant environmental/social justice implications given SLR

Suzana Mic, Jennifer Wolfe, Hugh Gladwin

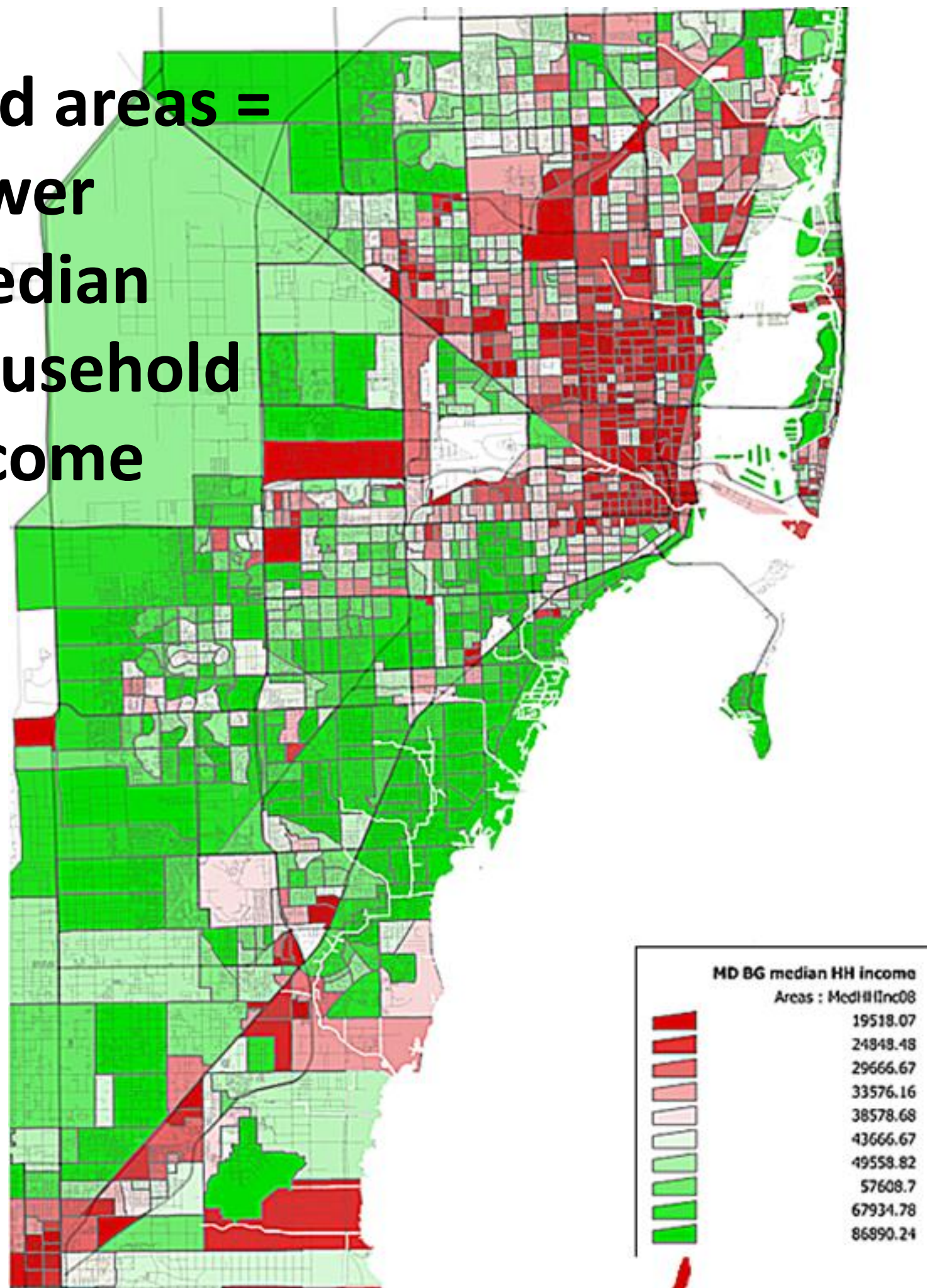


Residential location choice of non-natives moving into South Florida before World War II was strongly affected by ecosystem and hydrological constraints. Non-natives moved first onto higher elevation areas along the coastal ridge. Later draining of wetlands and creation of fill islands along the shore enabled later urban expansion west and east of the coastal Ridge into former Everglade areas and reconfigured barrier islands. Since in-migration patterns over time have been ethnically and socio-economically differentiated, clear spatial relationships now exist between ecosystem and human system patterns.



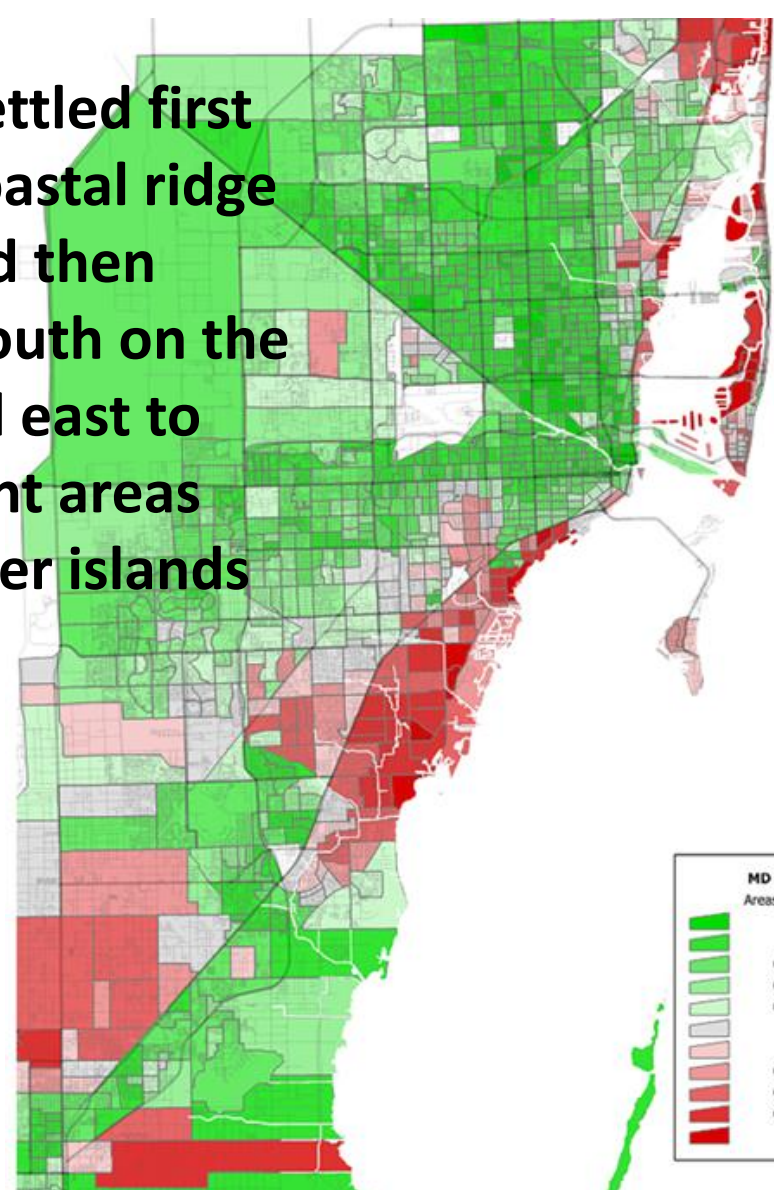
Maps from 2000 US Census block group data

Red areas = lower median household income

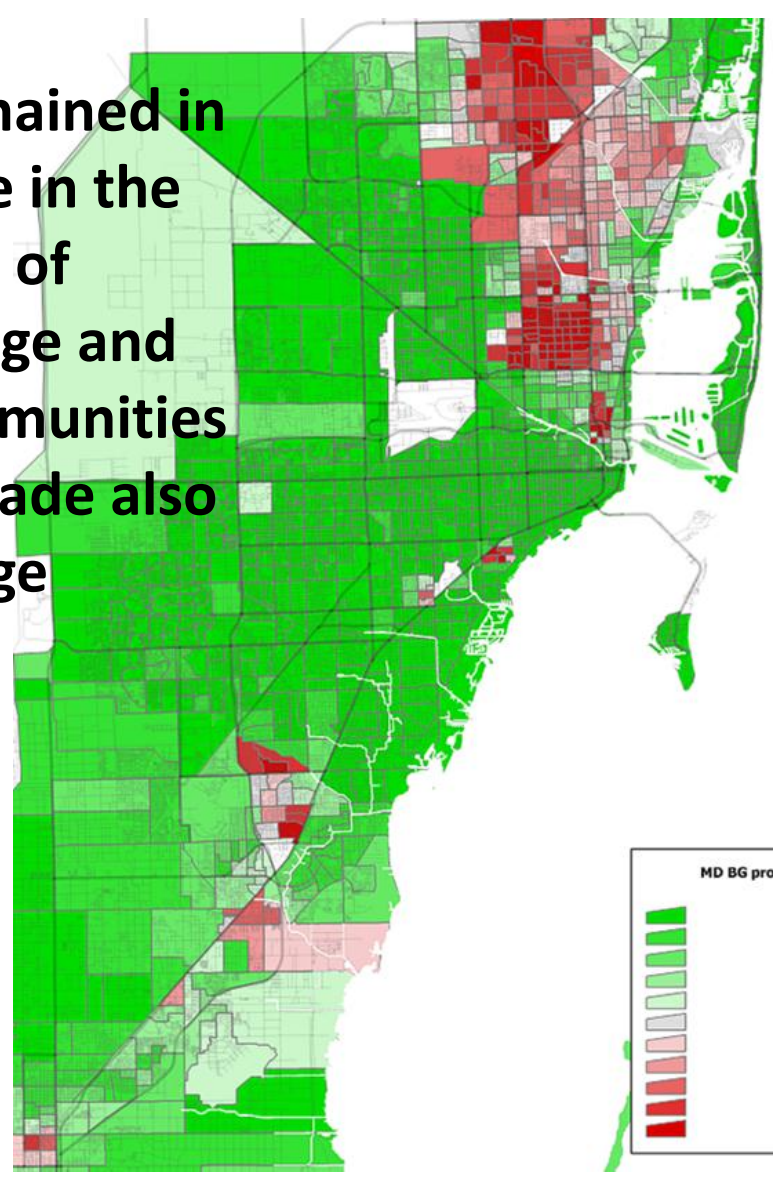


Low income areas persist in many parts of the old urban core on the coastal ridge. In the near future, climate change-induced sea level rise will require difficult choices about what to do to enable lower elevation areas to adapt. Given human system socio-cultural patterning in relation to elevation, ecosystems, and hydrology, these choices will have strong social and environmental justice implications.

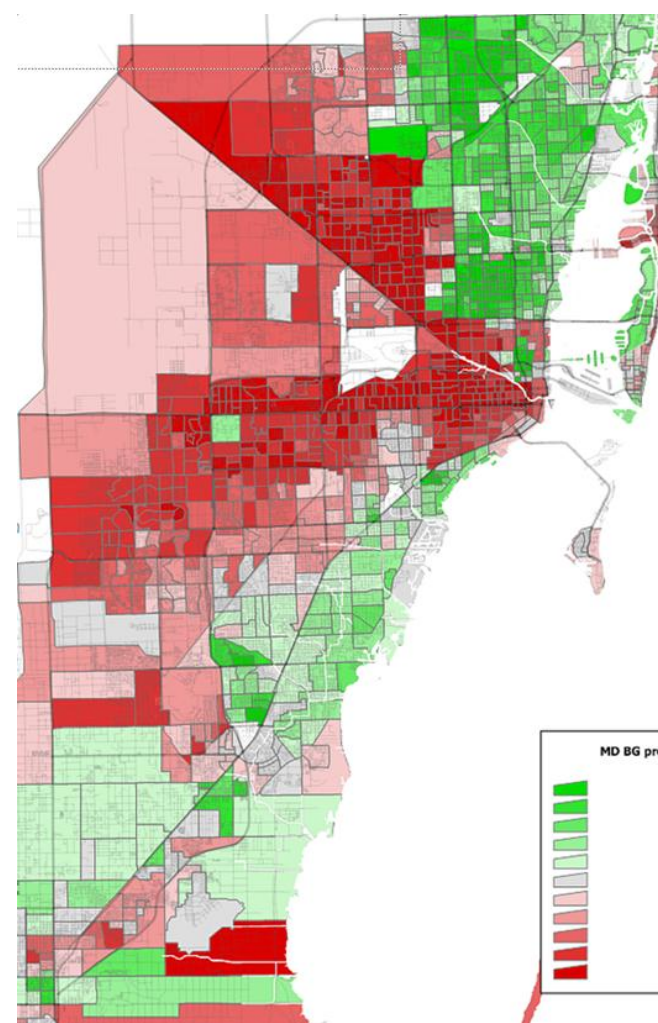
Anglos settled first on the coastal ridge north and then moved south on the ridge and east to waterfront areas and barrier islands



Blacks remained in urban core in the north part of coastal ridge and small communities in south Dade also on the ridge

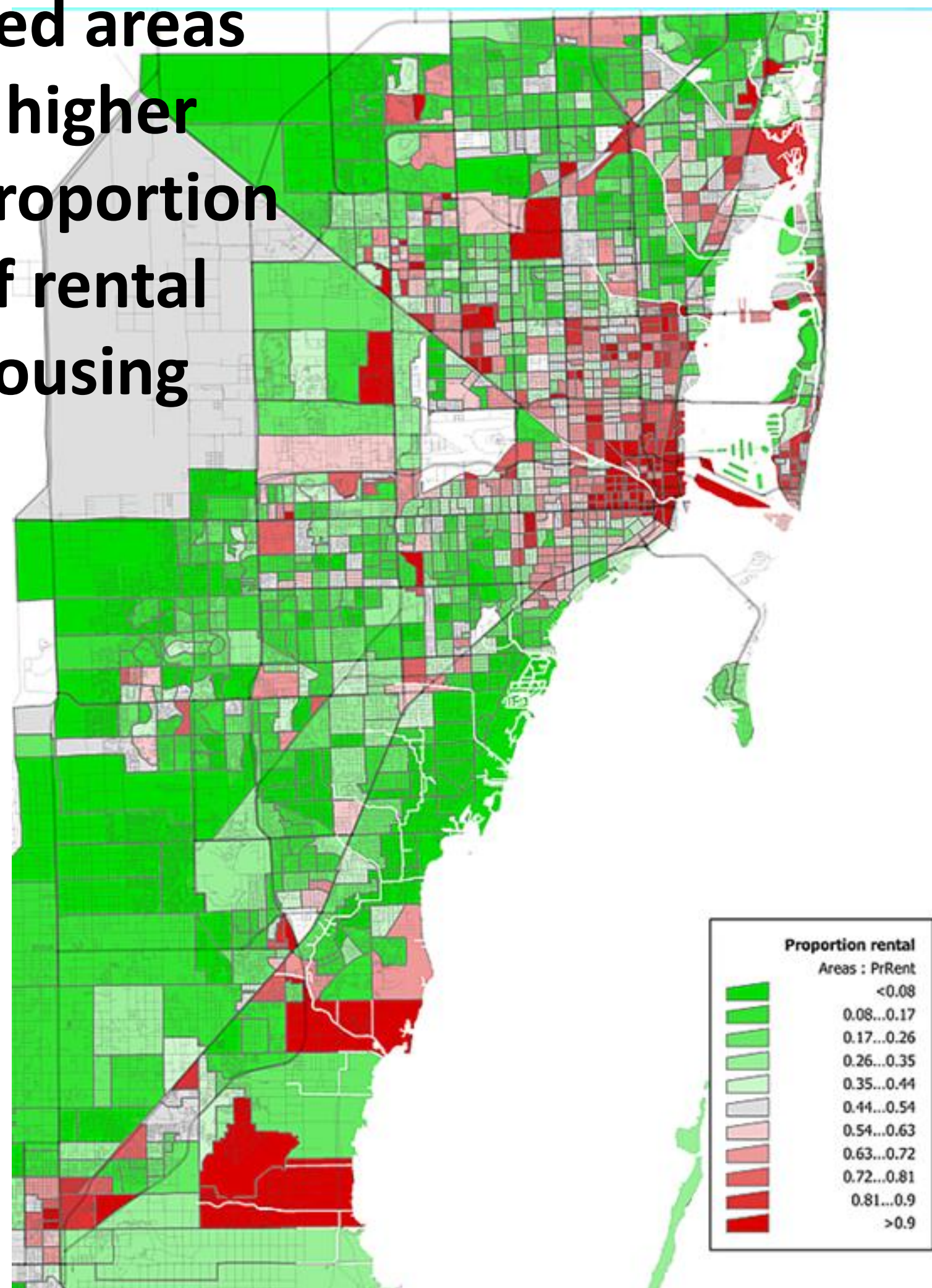


Red areas = higher concentration of ethnic group

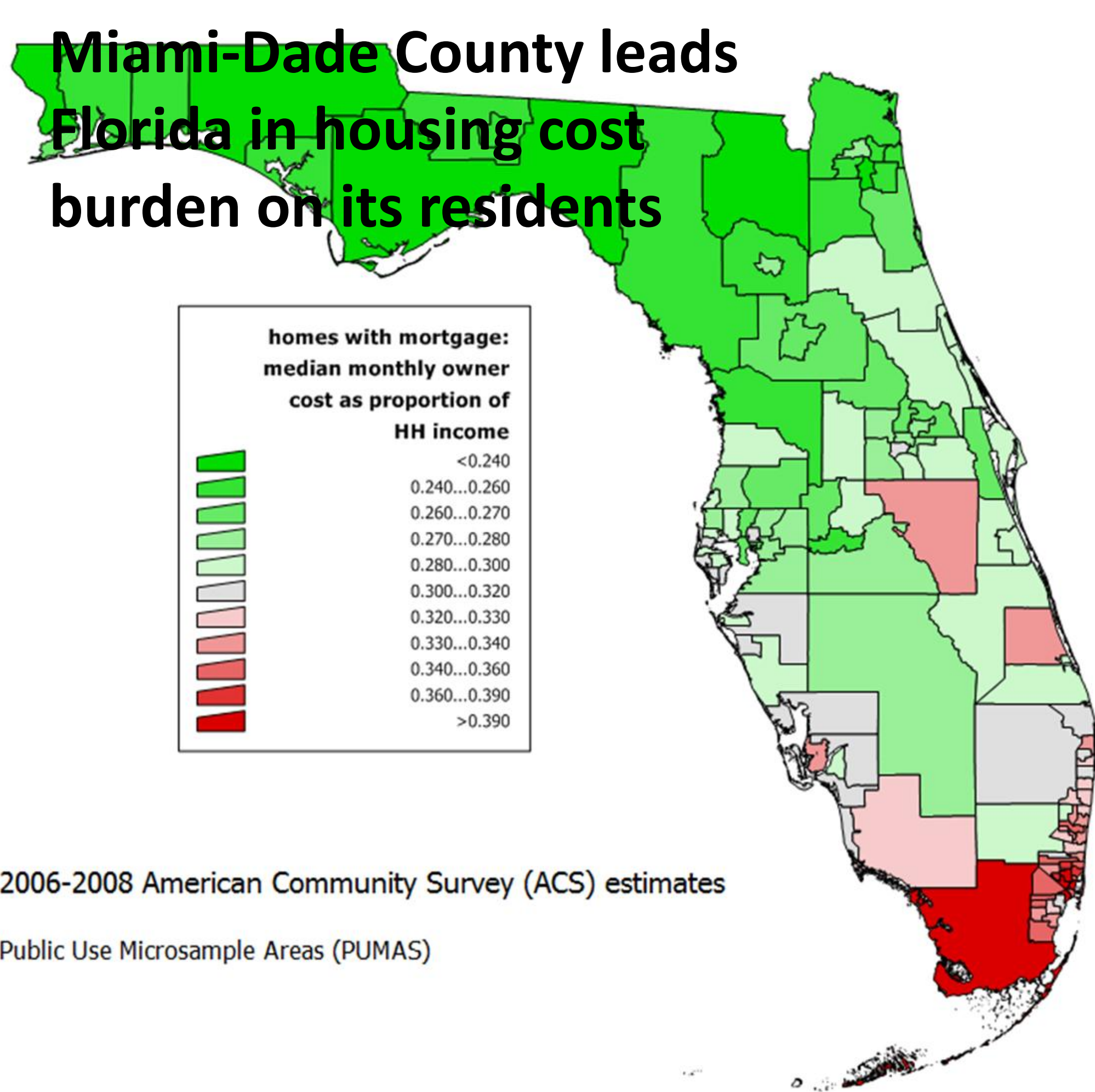


Hispanics predominated in the westward urban expansion after 1960

Red areas = higher proportion of rental housing



Miami-Dade County leads Florida in housing cost burden on its residents



2006-2008 American Community Survey (ACS) estimates
Public Use Microsample Areas (PUMAS)

South Miami-Dade summary maps

